

# Community Consultative Committee – November 2025

12 November 2025



# WELCOME AND APOLOGIES



**Welcome**

**Apologies**

**Declaration of interests**

**Confirmation of previous minutes**

# AGENDA



- 1. Actions from Previous Meeting**
- 2. Correspondence**
- 3. Operational Update**
- 4. Business Name and Website Update**
- 5. Approvals**
- 6. Business Arising**
- 7. Environmental Incidents / Non-compliances**
- 8. Environmental Performance**
- 9. Community Complaints & Enquiries**
- 10. Optional Site Tour**

## ACTIONS / BUSINESS ARISING FROM PREVIOUS MINUTES



Action / Business Arising	Action Owner	Update
Site tour	NvB	Optional site tour after CCC meeting.

## Correspondence since previous meeting

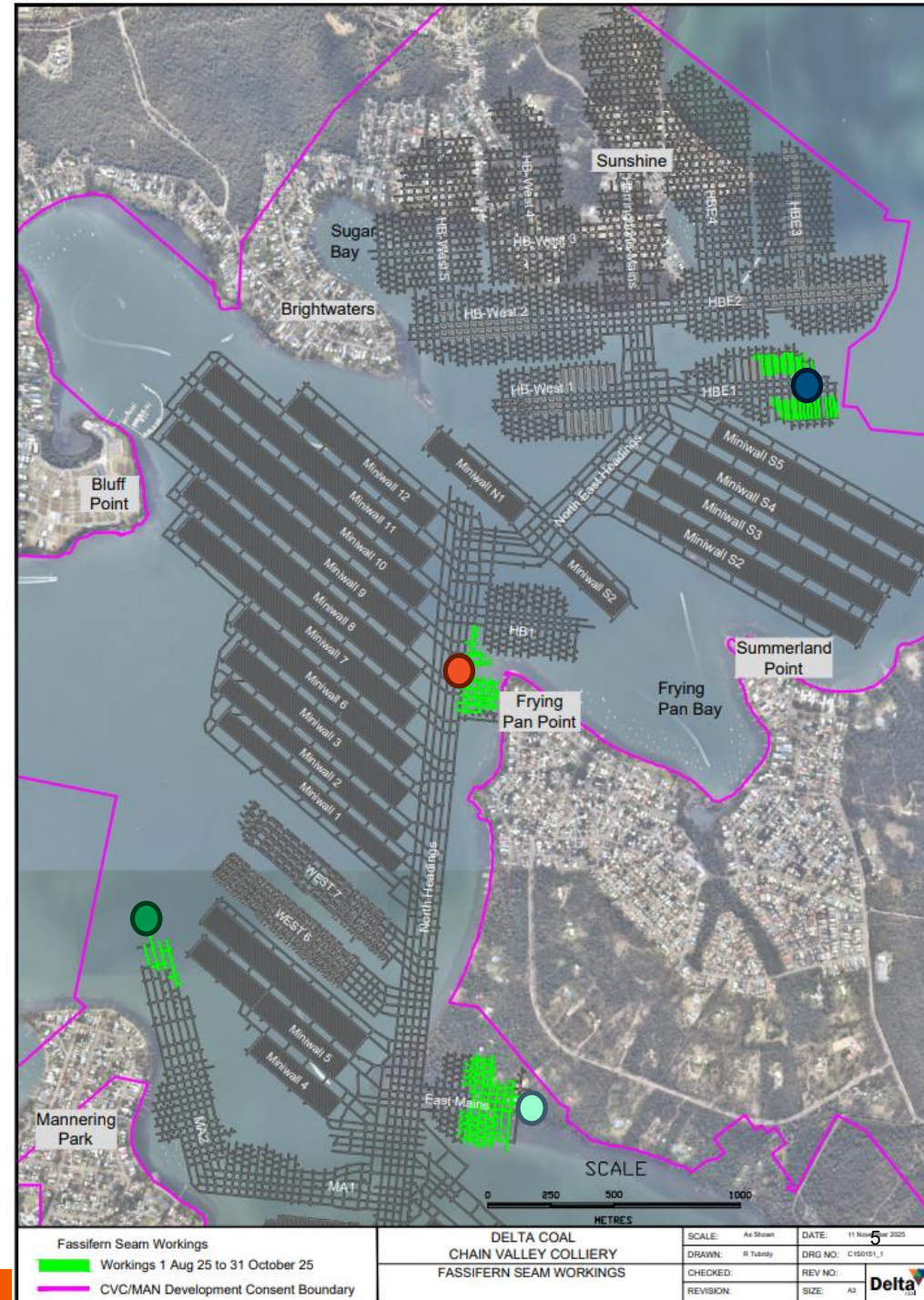
- 26/08/25 – emails LM/MMH to CCC – Draft Minutes and Link to new EPA guidelines on greenhouse gas emissions.



# OPERATIONAL UPDATE

## Production

- Secondary extraction in HB-E1 anel.
- Commenced First workings in HB-2 Panel.
- Continuation of workings through MA2 (heavily faulted area).
- Continued first workings in East Mains.
- Production 1 August 2025 to 31 October 2025 was 281,938t ROM Coal.



## Current Approvals

### **Chain Valley Colliery**

- EPL 1770: Environmental Protection License - April 2025.
- CVC SSD-5465 (MOD 4): Development Consent – August 2021
- Extraction Plan: MWS5 and NPA (Amendment 2 approved 10 June 2025)

### **Mannering Colliery**

- EPL 191 – Mannering Colliery – June 2025
- Mannering Colliery Project Approval PA 06\_0311 (MOD 5) – June 2020

# APPROVALS UPDATE



Chain Valley Consent Consolidation

Department assessment report has been completed and is pending Planning Minister sign-off prior to the recommendation being made and referral to the NSW Independent Planning Commission.

Mannering Colliery Project Approval (MP06\_0311) Mod 6

With DoP for approval.

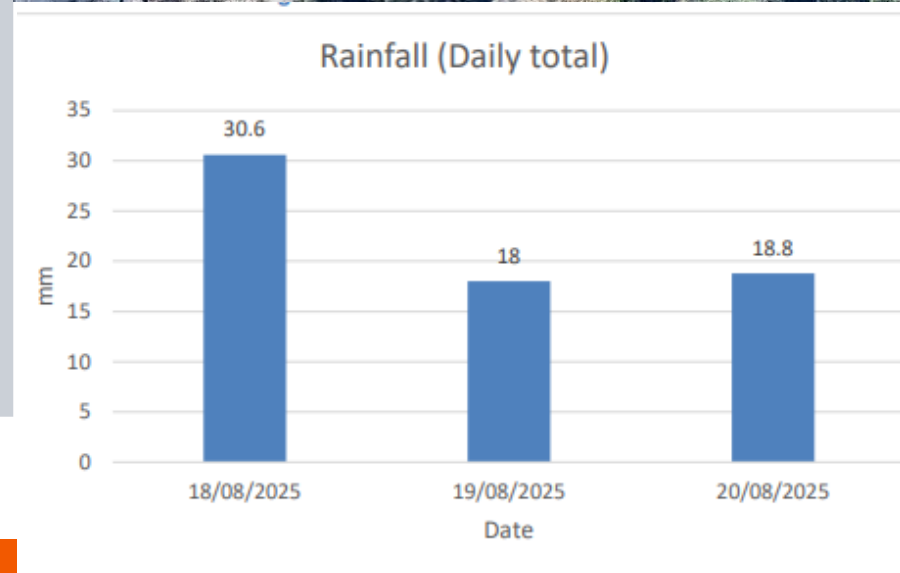


**Department of  
Planning, Housing  
and Infrastructure**



# ENVIRONMENTAL INCIDENTS / NON- COMPLIANCES

Site	MC
Date	20 August 2025
Type	Water Quality Exceedance
Details	<p>Exceedance of TSS at EPA Point 1 following high intensity rainfall event over 18 to 20 August 2025.</p> <p>Result of 80 mg/L exceeding 50 mg/L limit. NSW EPA provided exemption to license conditions during the severe weather event.</p>



# ENVIRONMENTAL INCIDENTS / NON- COMPLIANCES

Site	CVC
Date	25 September 2025
Type	Depositional Dust
Details	<p>Exceedance of maximum increase to depositional dust levels in a month period at DG004 at Chain Valley Colliery.</p> <p>Deemed to be unrelated to mine operations.</p>



# ENVIRONMENTAL PERFORMANCE

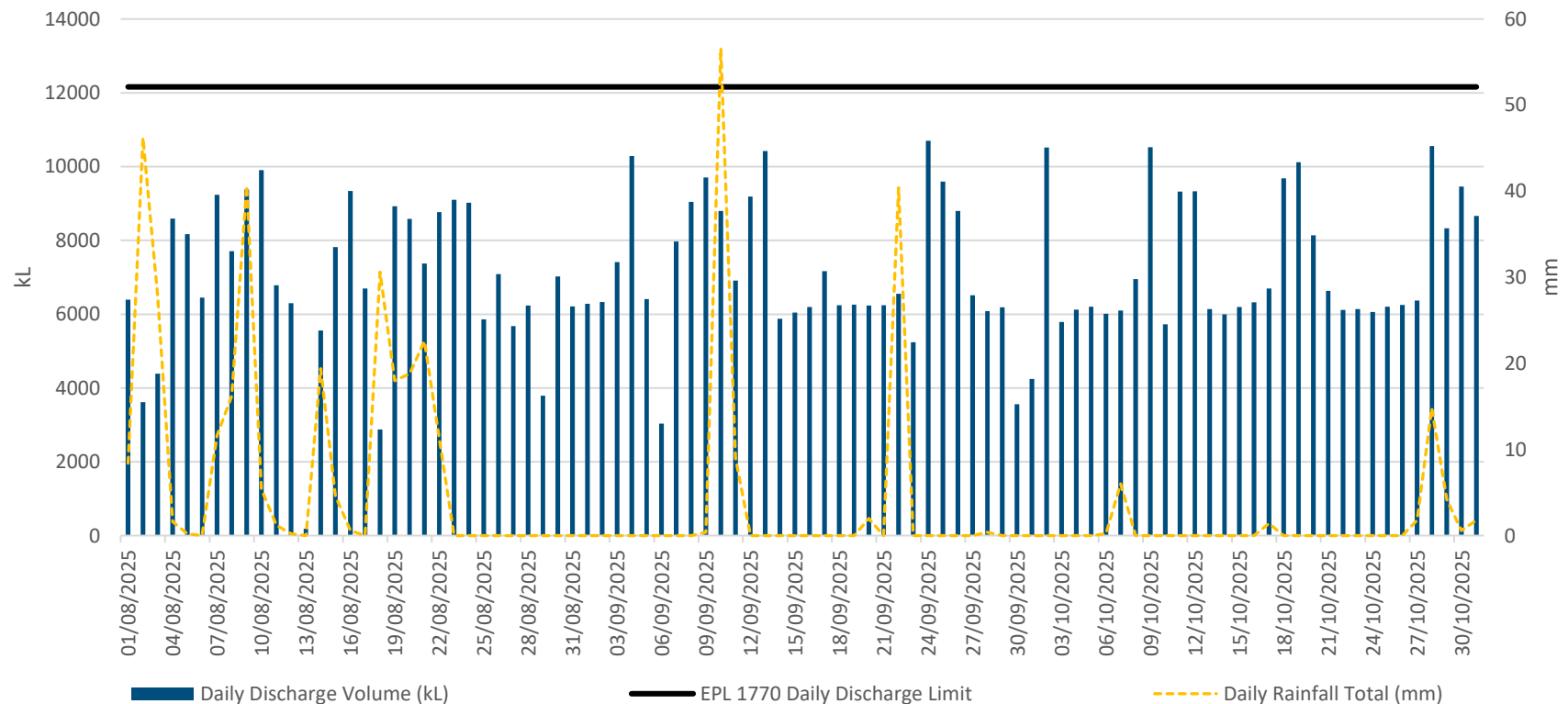
## LDP27 (spillway discharges)

No discharge between  
1 August -31 October 2025.



## CVC Surface Water Daily Discharge and Rainfall Volumes

CVC LDP1 Discharge 1 August - 31 October 2025



# ENVIRONMENTAL PERFORMANCE

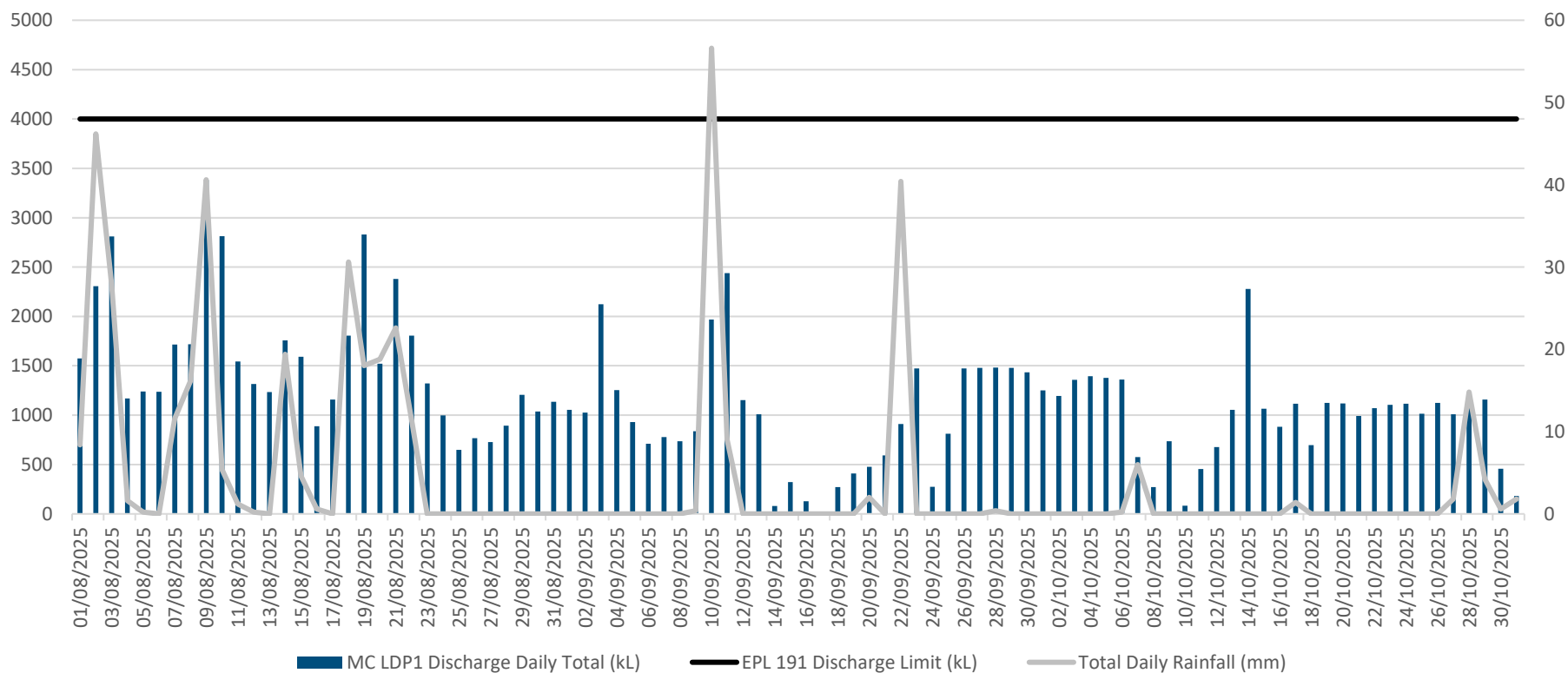


## CVC Surface Routine Water Quality Monitoring (LDP1 Monthly)

LDP1	Limits	Aug - 2025	Sep - 2025	Oct - 2025
pH (pH Units)	6.5-8.5	7.72	7.75	7.77
Total Suspended Solids (mg/L)	50	<5	10	13
Oil and Grease (mg/L)	10	<5	<5	<5

## MC Surface Water Daily Discharge Volume and Rainfall Volumes

MC LDP1 - Surface Water Daily Discharge  
1 August - 31 October 2025



# ENVIRONMENTAL PERFORMANCE

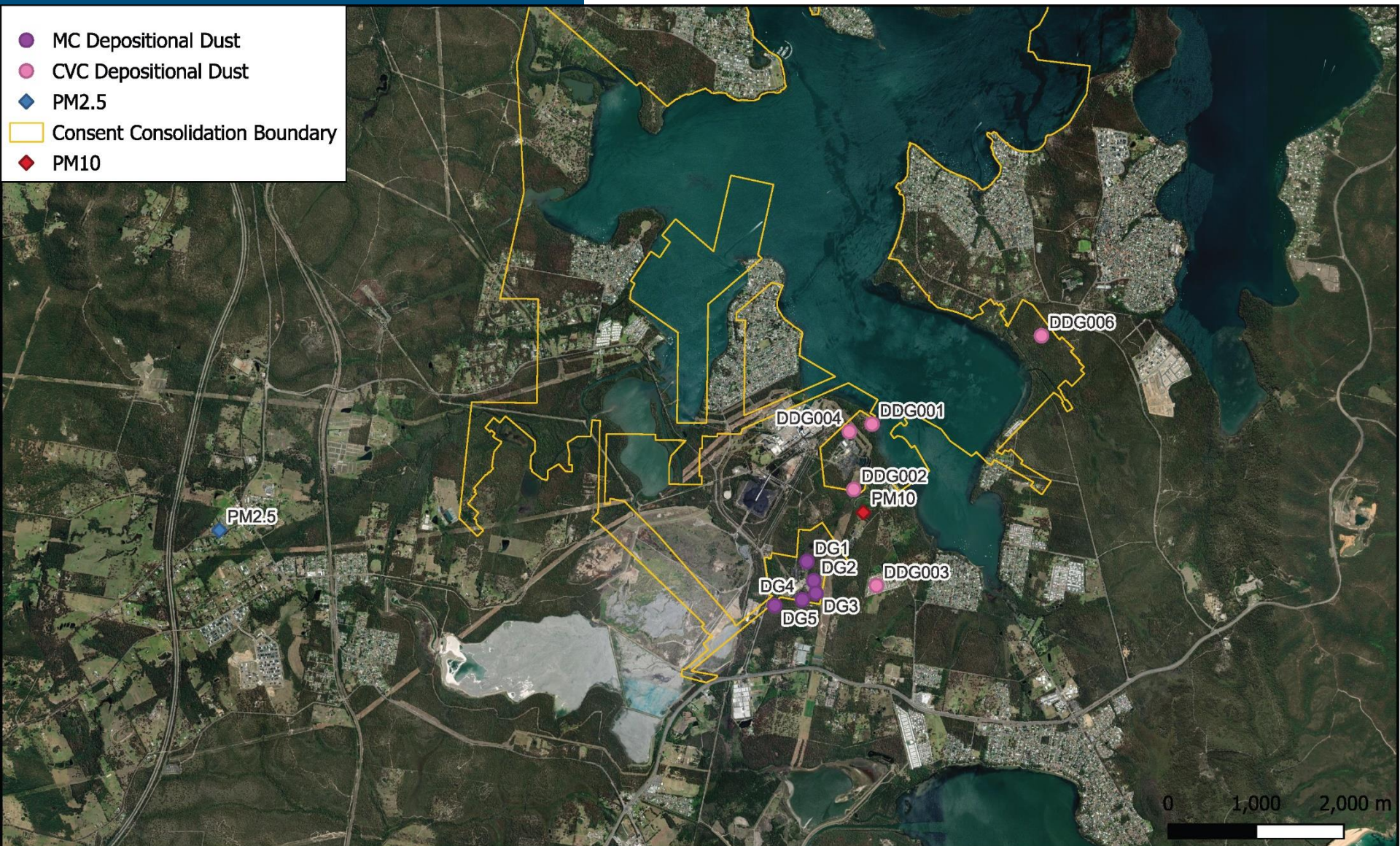




## MC Surface Water Quality Monitoring

LDP1	Limits	Aug - 2025	Sep - 2025	Oct - 2025
Oil & Grease mg/L	10	<5	<5	<5
TSS mg/L	50	80	20	19
pH	6.5-8.5	7.81	7.98	7.99



- MC Depositional Dust
- CVC Depositional Dust
- PM2.5
- Consent Consolidation Boundary
- PM10



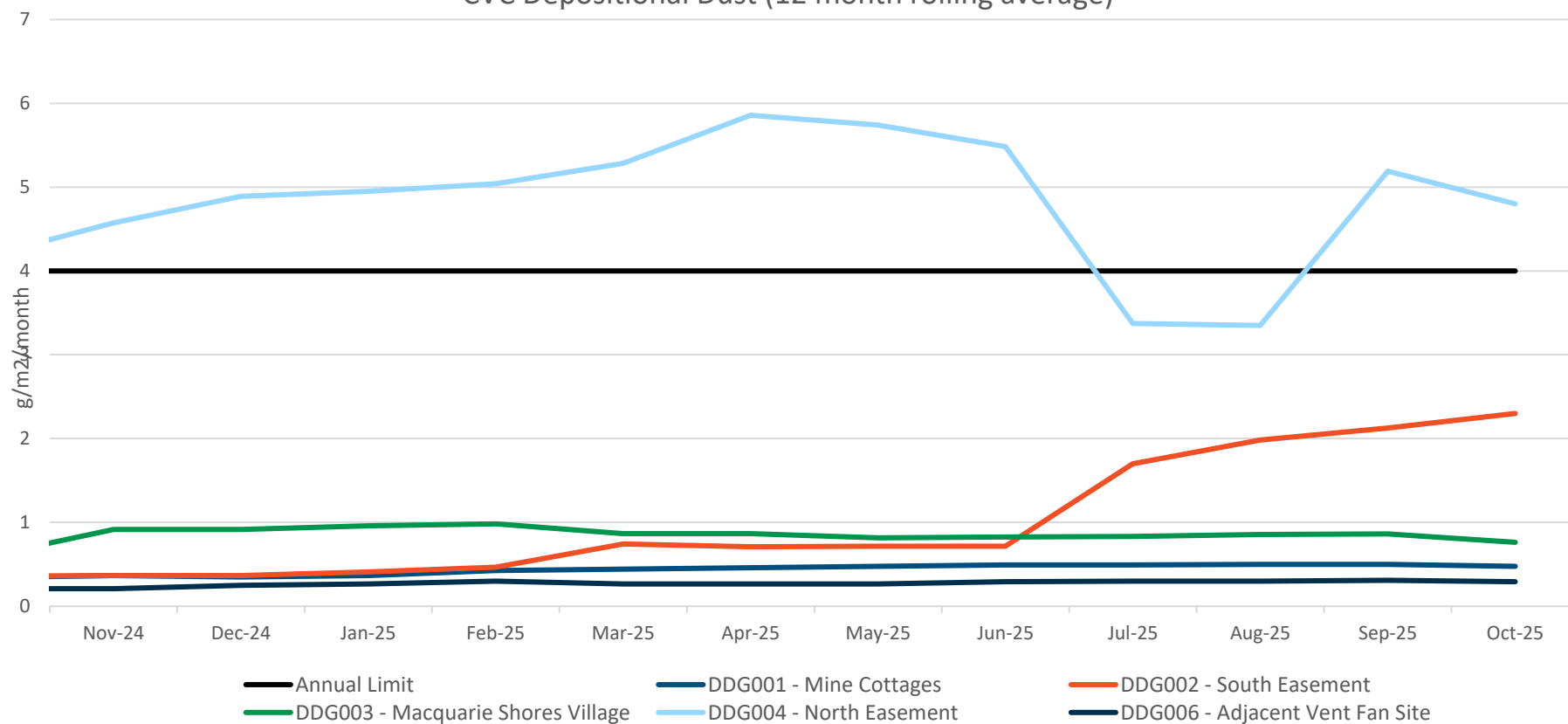
 	Delta Coal Mannering Colliery		Date:12 Nov 2024	Scale: As shown
	Air Quality Monitoring Locations		Drawn: LM	DRG NO: N/A
			Checked: -	REV NO: 0
			Signed: -	Size: A3

# ENVIRONMENTAL PERFORMANCE



## CVC Depositional Dust Monitoring

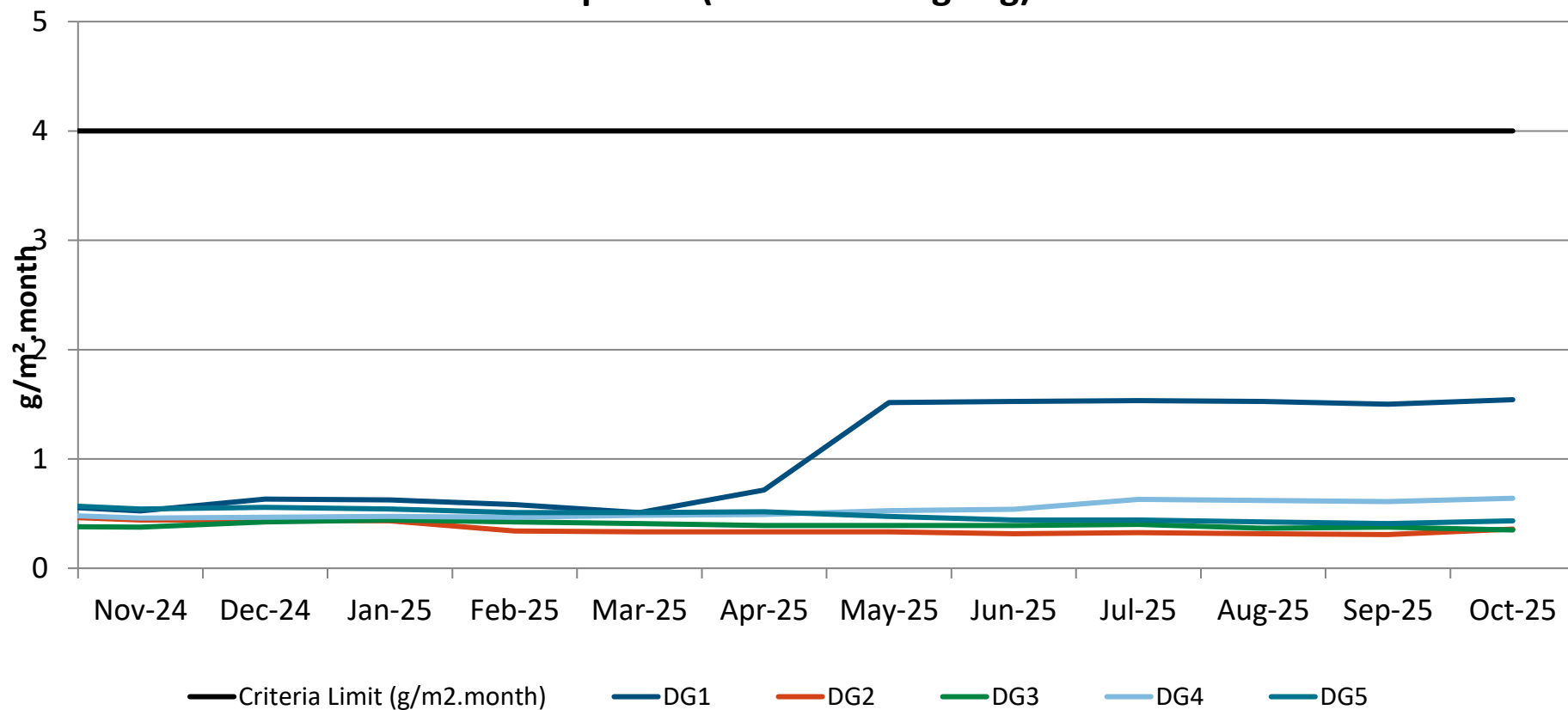
CVC Depositional Dust (12 month rolling average)





## MC Depositional Dust Monitoring

Dep Dust (12 mth rolling avg)

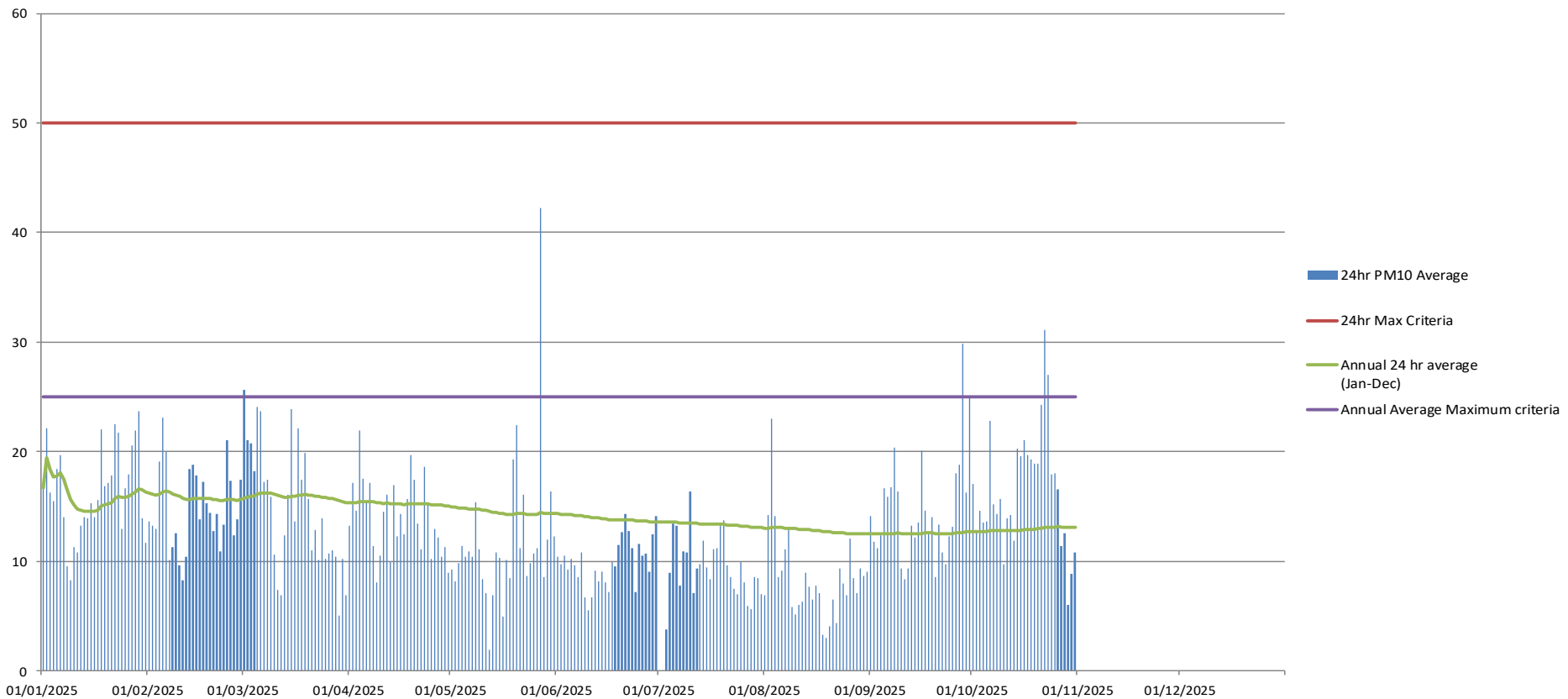


# ENVIRONMENTAL PERFORMANCE



## PM<sub>10</sub> Monitoring

Chain Valley Colliery - 2025 TEOM PM10 ( $\mu\text{g}/\text{m}^3$ )

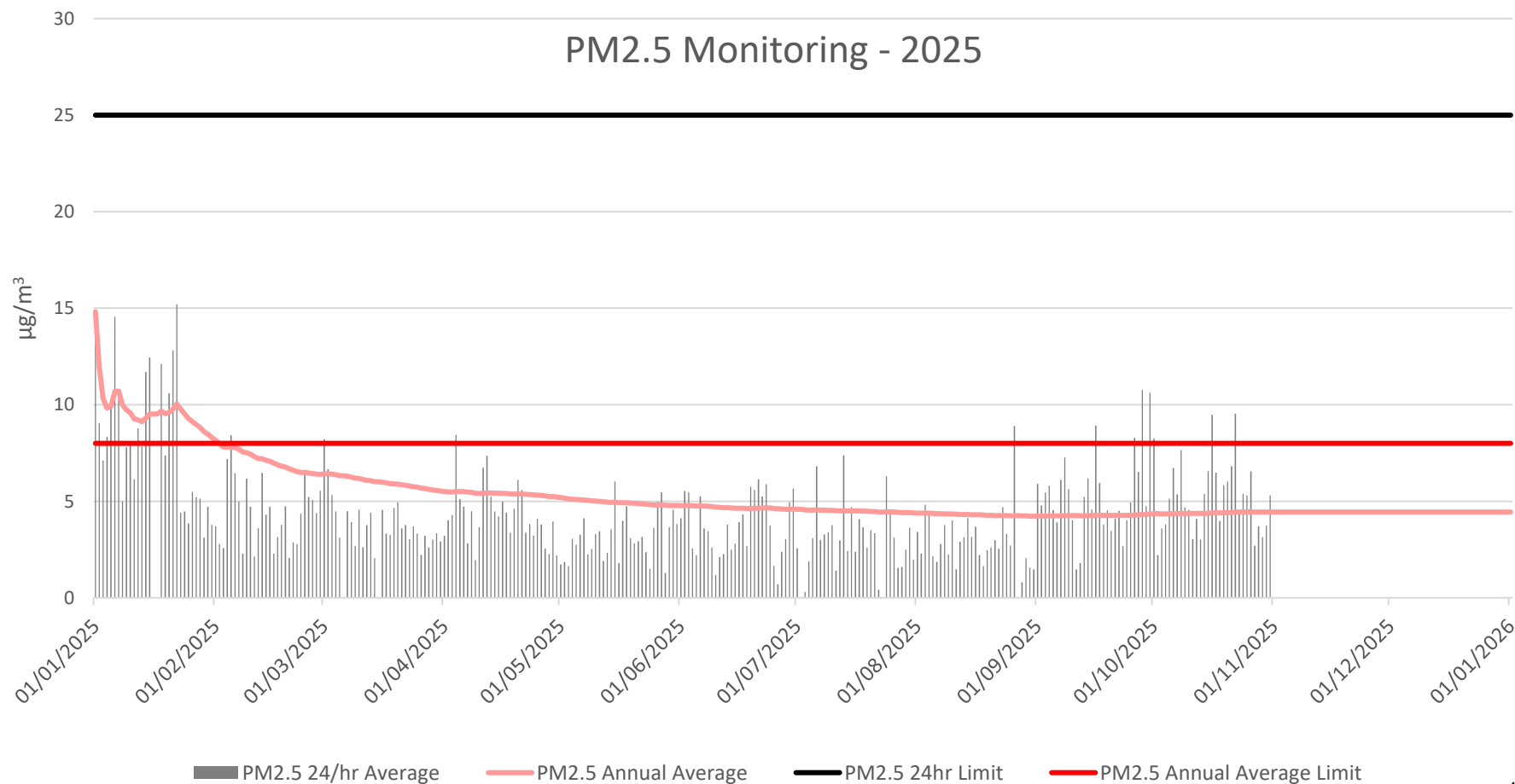


# ENVIRONMENTAL PERFORMANCE



## PM<sub>2.5</sub> Monitoring

PM2.5 Monitoring - 2025

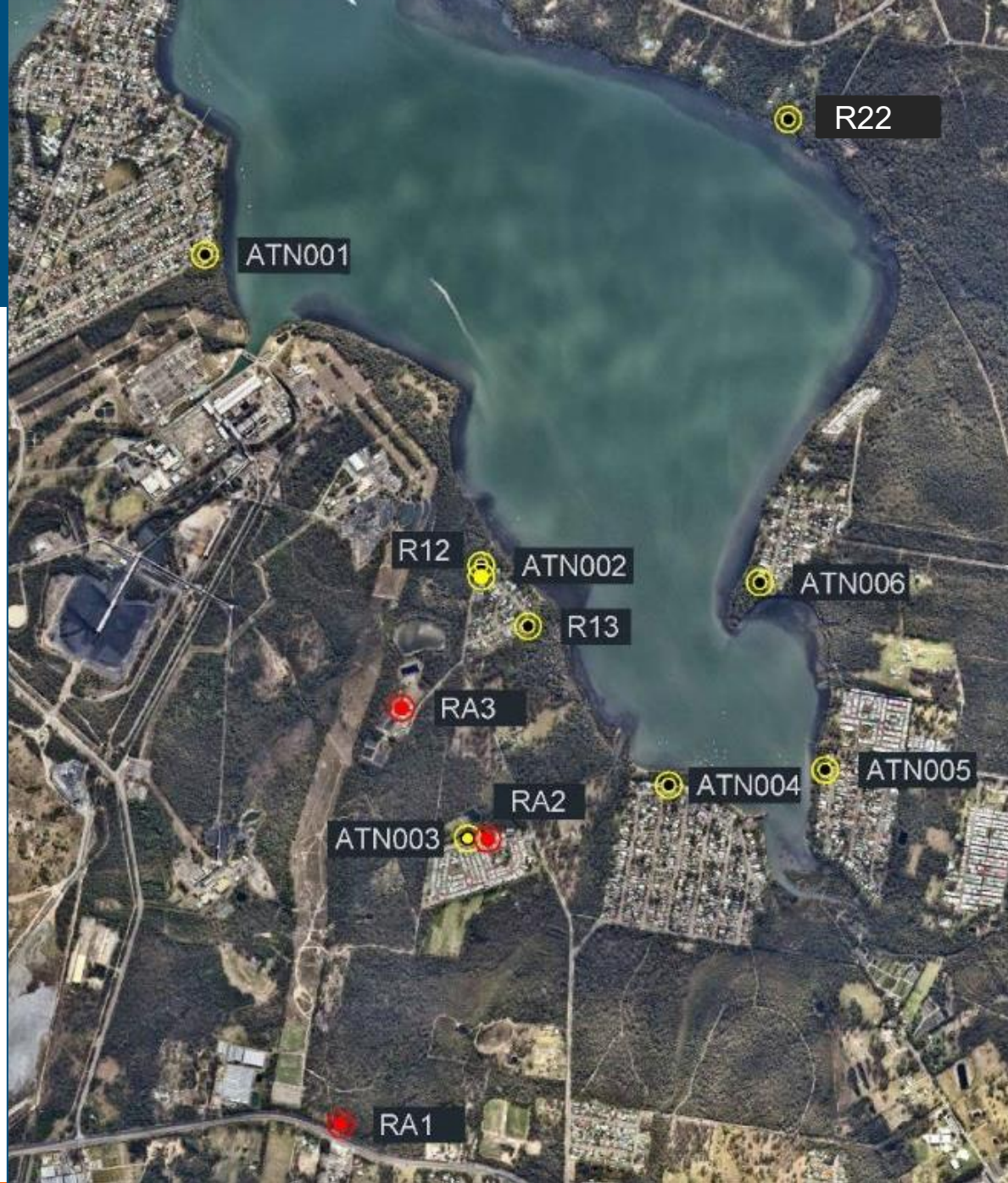


# ENVIRONMENTAL PERFORMANCE

## Noise Monitoring Locations

Red = MC  
Monitoring Location

Yellow = CVC  
Monitoring Location





# ENVIRONMENTAL PERFORMANCE



## Noise Monitoring – CVC

Q3 2025 noise monitoring was undertaken on 25, 28 August and 5 September 2025.

The highest result for each monitoring location during the monitoring period is presented.

LFN = Low Frequency Noise Penalty.

Monitoring Point	Site Contributions, dB		Noise Limit		Compliance Status
	LA <sub>EQ</sub> (15 min)	LAMAX	LA <sub>EQ</sub> (15 min)	LAMAX	
Chain Valley Colliery Q3 2025					
ATN001	IA	IA	38	45	☑
ATN002	IA	IA	49	54	☑
ATN003	IA	IA	36	45	☑
ATN004	IA	IA	35	45	☑
ATN005	IA	IA	35	45	☑
ATN006	IA	IA	37	45	☑
R22	46 (41 + 5 LFN)	42	46	46	☑
R12	IA	IA	49	53	☑
R13	IA	IA	43	49	☑

# ENVIRONMENTAL PERFORMANCE



## Noise Monitoring – MC

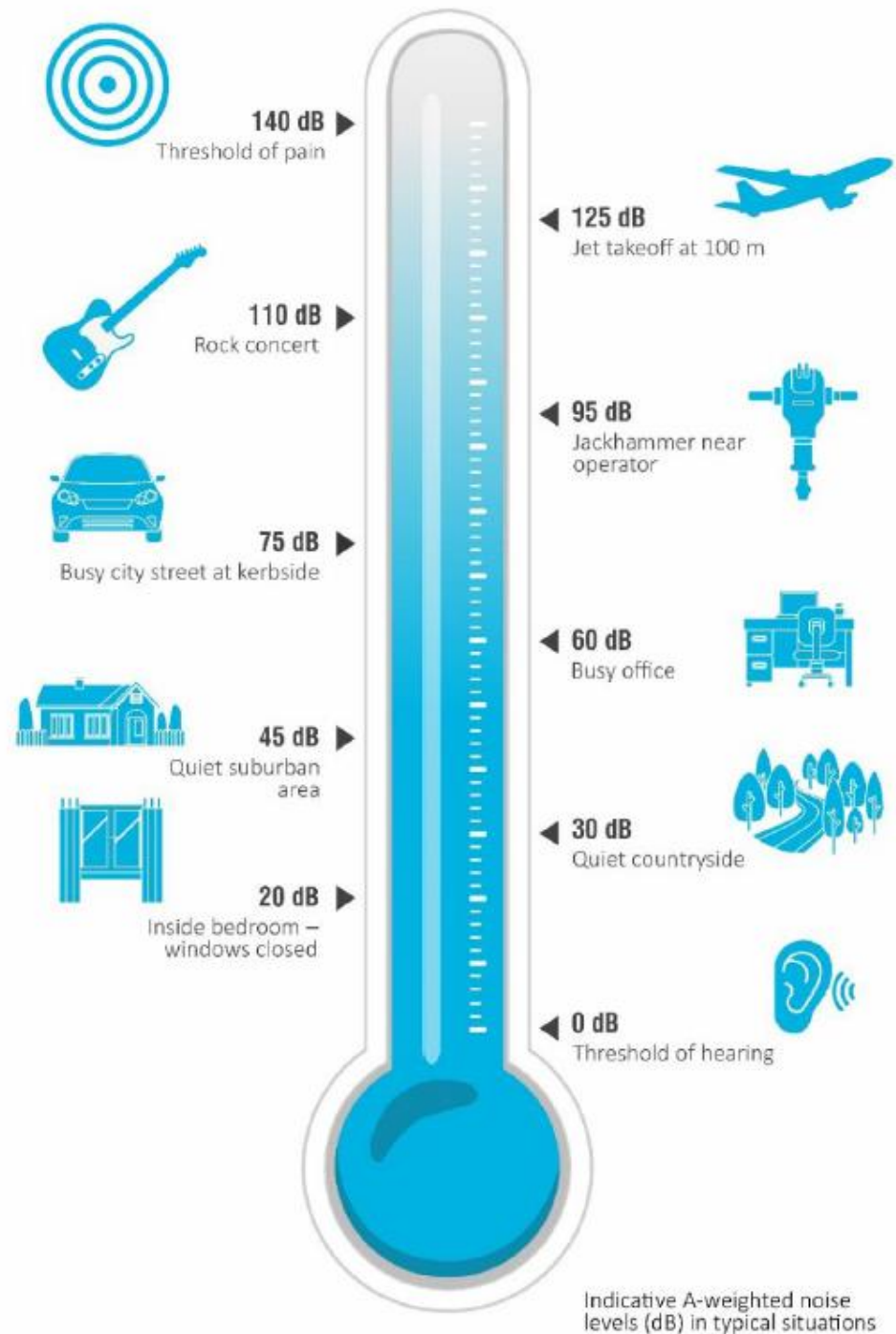
No Exceedances for MC noise monitoring between August and October 2025.

Highest result recorded during monitoring for a location is presented. Monitoring conducted during Evening (6-10pm) and Night period (10pm onward). IA = Inaudible.

Location	Date	Site Contributions, dB		Noise Limits, dB		Compliance status
		LAEQ	LAMAX	LAEQ	LAMAX	
August 2025						
RA1	25/08/2025	IA	IA	36	46	☑
RA2		IA	IA	40	45	☑
RA3		IA	IA	39	49	☑
September 2025						
RA1	16/09/2025	IA	IA	36	46	☑
RA2		IA	IA	40	45	☑
RA3		IA	IA	39	49	☑
October 2025						
RA1	14/10/2025	IA	IA	36	46	☑
RA2		IA	IA	40	45	☑
RA3		IA	IA	39	49	☑

# ENVIRONMENTAL PERFORMANCE

## Noise Monitoring Noise Comparison



## **Community Complaints between 1 August 2025 and 31 October 2025:**

- Chain Valley Colliery - Nil community complaints received in period.
- Mannering Colliery - Nil community complaints received in period.

## **General Enquiries between 1 August 2025 and 31 October 2025:**

- No enquiries received

# Environmental Projects



- Dredging of Chain Valley Dam D8 (Initial Sedimentation dam).
- Installation of a new handrail at Mannering Pond B
- Installation of a new oil water separator at Mannering



# Questions?



# Optional Site Tour.